

Software get red-y (version 5)

Efficient device management for the thermal mass flow meters & controllers of the red-y smart series

With the **free get red-y software**, users now have **PC access to all connected Vögtlin measuring and control devices**. Beside displaying key information, users can also **view and modify various operating parameters**.

Thanks to intelligent device monitoring, the software is a perfect service and analysis tool, e.g. to check and adjust settings.



Fig.1 The software **get red-y 5** communicates via an USB cable with a **red-y smart** mass flow controller

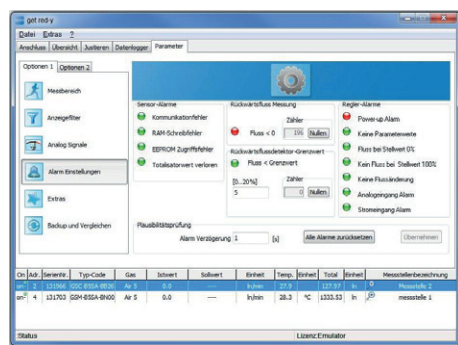


Fig.2 Tab with information on the operating state

Download the free get red-y software:
www.voegtlin.com/en/support/download/



Device information

- » Display all key device information, e.g. reading, temperature, total, valve voltage etc.
- » Specify a setpoint for flow and pressure controllers
- » Assign a device name, e.g. name of measuring point ID
- » Change the device address (Modbus, Profibus)
- » Visualization of measured data
- » Adjust the control speed



Operating state monitoring

The software monitors key operating parameters and indicates irregularities such as:

- » Sensor and communication errors
- » Unusual device behavior (instability, contamination, etc.)



Switch measurement units & gas type

- » Select the desired units of measurement
- » For devices that have been calibrated for several different gases (multigas), user can switch to different stored gas data sets



Plug & play with USB cable

Digital communication cable USB/RS485 (PDM-U Art. 328-2169) and versatile cable accessories ensure that measurement and control devices can be operated troublefree from the PC.



Logging, mixing & calibration module (optional)

- » Mix gases with fixed percental proportions
- » Master/Slave mixing function
- » Visualize and log all measured data
- » Export as CSV file for further use in MS Excel or similar program
- » Check for deviations in the mass flow meters and controllers



Calibration & adjustment module (optional/including training)

The calibration module can be used to check for deviations in the *red-y smart* series mass flow meters and controllers. The supplemental adjustment module permits manual or automatic adjustment.



System requirements

The *get red-y 5* software runs under Windows 7 & 10. For required hardware, please refer to the operating manual of the software.

➔ Overview of the software modules on page 2

| |  |  |  |
|--|---|---|---|
| Software / Modules | Basic | Logging, Mixing & Calibration Module ¹ | Calibration & Adjustment Module ^{1,6} |
| Function | | | |
| Display device information such as reading, temperature, valve voltage | ● | ● | ● |
| Totalizer | ● | ● | ● |
| Specify setpoint & adjust control speed ² | ● | ● | ● |
| Assign device name | ● | ● | ● |
| Switch units of measurement | ● | ● | ● |
| Visualize & adjust PID parameters / Graphic tool | ● | ● | ● |
| Operating state monitoring | ● | ● | ● |
| Zoom function ³ | ● | ● | ● |
| Switch analog signals | ● | ● | ● |
| Reset totalizer | ● | ● | ● |
| Save device data | ● | ● | ● |
| Restore device data | 5 | 5 | ● |
| Update device firmware | ● | ● | ● |
| Setpoint delay | ● | ● | ● |
| Pressure power-up setpoint | ● | ● | ● |
| Adjust display filter | | ● | ● |
| Set dynamic range | | ● | ● |
| Set full scale of measurement range | | ● | ● |
| Log measurement data | | ● | ● |
| CSV export of logged measurement data | | ● | ● |
| Gas mixing | | ● | |
| Verify calibration | | ● | ● |
| Manual adjustment | | | ● |
| Automatic adjustment ⁴ | | | ● |
| Pricing | Free of charge | On request | On request |

On request, other options may be enabled or added (e.g. for OEM applications). Please contact your sales representative for more information.

¹Requires a USB dongle. Multiple modules may be combined on one USB dongle.

²Only flow and pressure controllers *red-y smart controller* & *red-y smart pressure controller*

³Magnifies screen display of momentary flow rate for all connected instruments

⁴Requires a *red-y smart* reference device

⁵Must be released by the manufacturer if < SN160.000 (smart version 6)

⁶Offer and sale of adjustment functionality at the sole discretion of the manufacturer. The manufacturer reserves the right to refrain from offering or selling of this feature.

Download the latest get red-y software version:
https://www.voegtlin.com/data/329-3017_ml_getredy.zip



Vögtlin Instruments GmbH – gas flow technology
 St. Jakob-Strasse 84 | 4132 Muttenz (Switzerland)
 Phone +41 (0)61 756 63 00 | Fax +41 (0)61 756 63 01
www.voegtlin.com | info@voegtlin.com

